

Aviator MAX

Ideal for Large Commercial Car Park Applications

The Aviator MAX Controller is a tailored solution to efficiently manage large commercial car park ventilation applications. It has been developed to increase the energy efficiency of a car park, while ensuring the ventilation output is optimised. Aviator MAX works in conjunction with JetVent fans, pollutant sensors, VSDs, supply/exhaust fans and the Building Management System.

- AS1668.2 compliant atmospheric contaminant monitoring system
- Connect up to 50 JetVent fans, 16 Danfoss VLT Drives, 50 Fieldbus Sensors and 5 expansion modules
- Connect to either the 4.3" or large 7" graphic user interface (GUI)
- Can be connected to a BMS for easy system monitoring; Modbus or BACnet
- Three Mechanical switch board connections for Supply/Mixer/Exhaust fan groups with On/Auto/Off modes of operation
- Six Demand zones and one Fire Zone operation
- Integrated Smoke detection system for quick shut down
- Purge timer with real time clock and run indicator alarm
- Includes up to 20 program schedules



Aviator 7" GUI

Large Screen for Easy Navigation

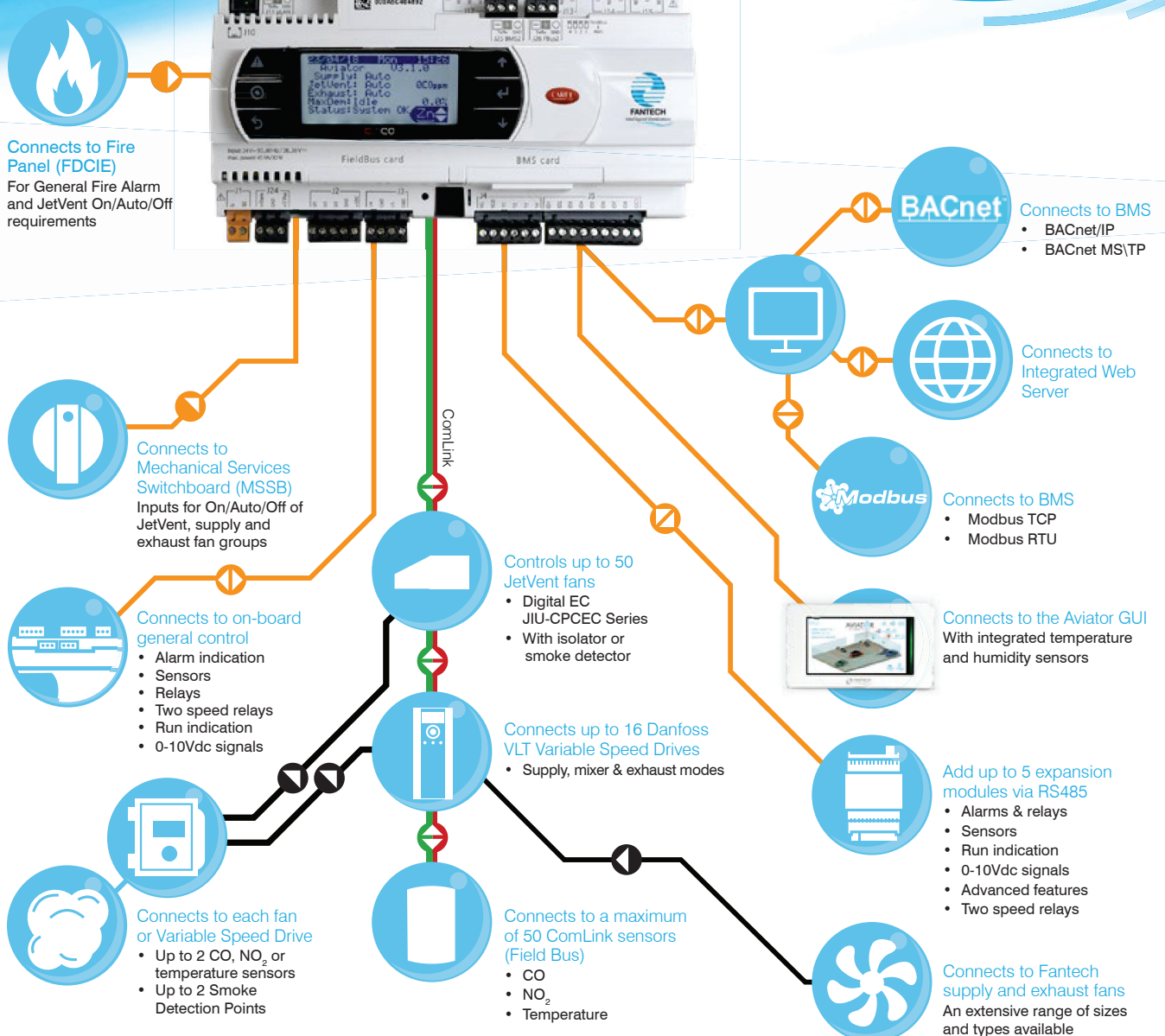
The Aviator 7" touchscreen features an intuitive and easy-to-use Graphic User Interface that works with the Aviator Max and Mini controllers. It can be mounted up to 500m from the Max or Mini controller, either on a mechanical service panel or within the control room.

- One 7" GUI can monitor up to 12 Aviator controllers separately
- Main screen summarises the system status and includes highest pollutant sensor monitoring
- Zone screens for each demand control area
- Individual screens for every fan and sensor that is connected
- Service setting and controller remote access screens
- Mechanical Services Auto/On/Off touchscreen control



Aviator MAX

Control System Layout



Aviator MINI

Ideal for Smaller Enclosed Car Parks

The Aviator MINI Controller is designed to efficiently manage smaller car park ventilation applications that have only one mechanical switchboard with Auto/On/off control for all fans. It has been developed to increase the energy efficiency of a car park, while ensuring the ventilation output is optimised. Aviator MINI works in conjunction with JetVent fans, pollutant sensors, VSDs, supply/exhaust fans and Building Management Systems. The MINI controller can be configured to match your car park's individual requirements.

- AS1668.2 compliant atmospheric contaminant monitoring system
- Connect up to 50 JetVent fans, 16 Danfoss VLT Drives and 20 Fieldbus Sensors
- Connect to either the 4.3" or large 7" graphic user interface (GUI)
- Can be connected to a BMS for easy system monitoring; Modbus or BACnet
- One mechanical switch board connections for Supply/Mixer/Exhaust fan groups with On/Auto/Off modes of operation
- Six Demand zone and one Fire Zone operation
- Integrated Smoke detection system for quick shut down
- Purge timer with real time clock and run indicator alarm
- Includes up to 20 program schedules



Aviator 4.3" GUI

Easy to Use and Navigate

The Aviator 4.3" touchscreen has been designed to be an easy-to-use Graphic User Interface for the Aviator Max and Mini controllers. Similar to the larger 7" touchscreen model, this Aviator 4.3" GUI can be mounted up to 500m away from the main controller.

- One 4.3" GUI can monitor one Aviator controller
- Main screen summarises the system status and includes highest pollutant sensor monitoring
- Zone screens for each demand control area
- Individual screens for every fan and sensor that is connected
- Service setting & controller remote access screens
- Mechanical Services Auto/On/Off touchscreen control



Aviator MINI

Control System Layout



Connects to Fire Panel (FDCIE)
For General Fire Alarm and JetVent On/Auto/Off requirements



Connects to Mechanical Services Switchboard (MSSB)
Input for On/Auto/Off of all fans as one group



Connects to on-board general control

- Alarm indication
- Sensors
- Relays
- Two speed relays
- Run indication
- 0-10Vdc signals



Connects to each fan or Variable Speed Drive

- Up to 2 CO, NO₂ or temperature sensors
- Up to 2 Smoke Detection Points

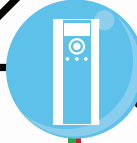


ComLink



Controls up to 50 JetVent fans

- Digital EC JIU-CPPEC Series
- With isolator or smoke detector



Connects up to 16 Danfoss VLT Variable Speed Drives

- Supply, mixer & exhaust modes



Connects to a maximum of 20 ComLink sensors (Field Bus)

- CO
- NO₂
- Temperature

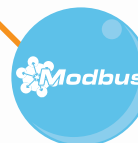


Connects to BMS

- BACnet/IP
- BACnet MS/TP



Connects to Integrated Web Server



Connects to BMS

- Modbus TCP
- Modbus RTU



Connects to the Aviator GUI
With integrated temperature and humidity sensors



Connects to Fantech supply and exhaust fans
An extensive range of sizes and types available